



ESTHER BOSSHARD

rona on the moon

SELECTED PAINTINGS

Available 6 August - 28 August 2021, RDS Gallery, 6 Castle Street, Dunedin

Contact: radner@rdsgallery.co.nz * 021-215-3626

#1

***Grass, Snow, Sky* [Twizel], 2021.**

Oil on canvas, 61cm x 100cm.



#2

Moon Painting, 2021.

Oil on canvas, 61cm x 100cm.



#3

Coastline with Birds, 2021.
Oil on canvas, 61cm x 91cm.



#4

Rain Painting [Middlemarch], 2021.
Oil on hessian, 50cm x 74cm.



#5

Flotsam and Jetsam, 2020.
Oil on hessian, 46cm x 61cm.



#6

***Sea and Moon* [Catlins], 2020.
Oil on hessian, 41cm x 59cm.**



#7

Tide Painting [Catlins], 2020.
Oil on hessian, 40cm x 50.5cm.



#8

***Inlet* [Caitlins], 2018.**

Oil on hessian. 30cm x 40cm.



#9

Fence [Middlemarch], 2021.
Oil on hessian, 35cm x 45.4cm.



#10

Rocky Coast with Shags, 2020-21.

Oil on hessian, 40cm x 50.5cm.



#11

***Collecting Wood* [Allans Beach, Otago Peninsula],
2021. Oil on canvas, 40cm x 30cm.**



#12

Dog Surveying His Land [Middlemarch], 2021.

Oil on hessian, 40cm x 50.5cm.



#13

Hillside, 2019.

Oil on hessian, 30cm x 40cm.



#14

Opaque Ocean, 2019.

Oil on hessian, 30cm x 40cm.



#15

Rocks and Waves, 2018.

Oil on hessian, 14.5cm x 35cm.



#16

Sheepland, 2019-21.

Oil on board, 14cm x 35cm.



#17

***Dog and Its Owner* [St Clair, Dunedin], 2019.**

Oil on board, 15cm x 20cm.



#18

Moon Hiding Behind a Cloud, 2021.

Oil on board, 14cm 17.5cm.



#19

Moon Over the Sea, 2021.

Oil on board, 17.5cm x 14cm.



#20

Moon Over Dunedin, 2021.
Oil on wood, 9cm x 16.5cm.



#21

Dog on Night Expedition [St Clair Dunedin], 2021.

Oil on wood, 9cm x 16cm.



#22

Dunedin Harbour, Night-time, Rain, 2021.

Oil on wood, 9cm x 16.5 cm.



#23

Dunedin Harbour at Night, 2021.

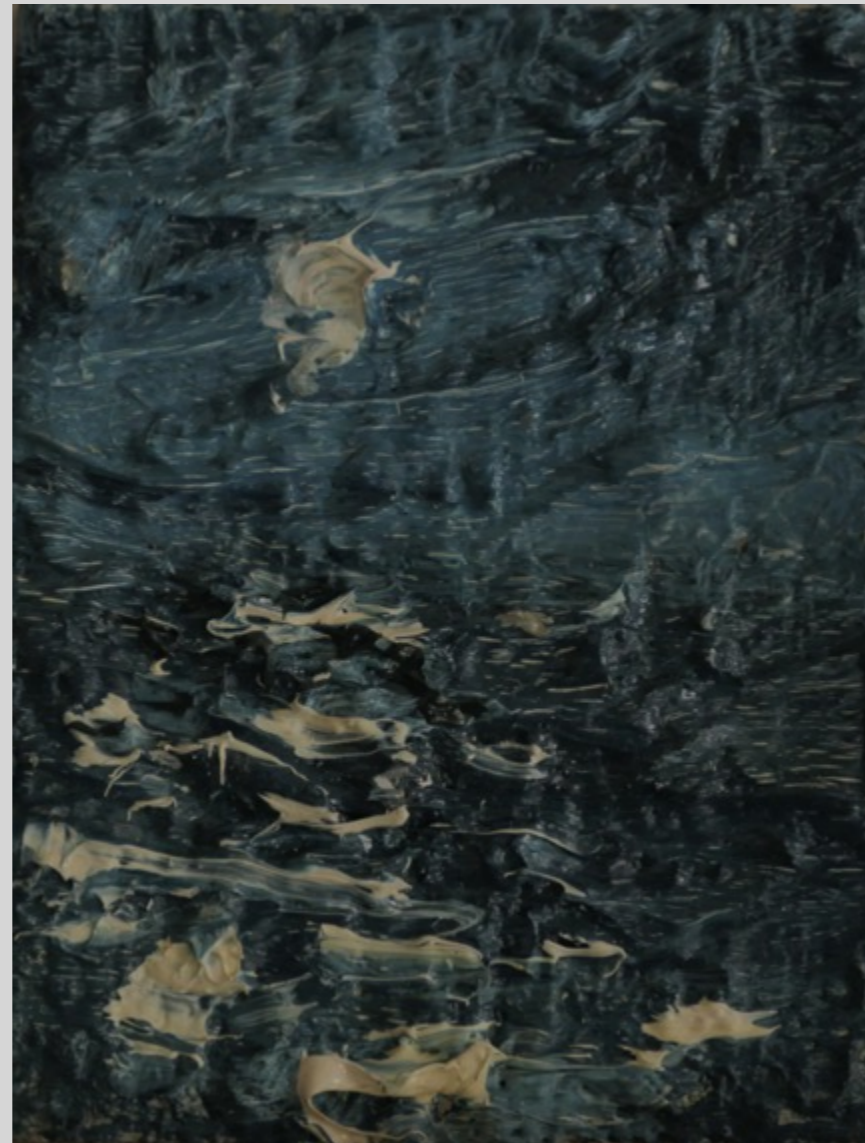
Oil on wood, 8cm x 13cm.



#24

Night-time Pocket Painting, 2019.

Oil on board, 8.5cm x 6.5cm.



#25

Person with Sticks, 2019.

Oil on hessian, 7.5cm x 12cm.



#26

***Bach* [Bull Creek], 2021.**

Oil on wood, 9 cm x 10.5cm.



#27

Cowland, 2018-20.

Oil on hessian, 5.5cm x 17.5cm.



#28

Sparkly Ocean Pocket Painting, 2019.

Oil on board, 11.5cm x 6.5cm.



#29a,29b, 29c

***Hula Hoopers Triptych*, [Parts I, II, III], 2021.**

Oil on board, 7cm x 10 cm.



#30

Trees [Woodhaugh], 2021.
Oil on board, 10cm x 8.5cm



#31

Watching the Waves, 2019.
12cm x 16cm, oil on hessian.



#32

Rock Climbing, 2019.

Oil on hessian, 5.5cm x 15cm.



#33a, 33c, 33b
St Clair Triptych, 2019.
[Parts I, II, III]



**I Oil on hessian,
4cm x 10cm.**



II Oil on board, 4cm x 10cm.



III Oil on hessian, 5.5cm x 10.5cm

#34

Moon behind Poplar Trees [Middlemarch], 2018.

Oil on hessian, 8.5cm x 5cm.



#35

Dog Taking Itself for a Walk
[St Clair, Dunedin], 2020.
Oil on hessian, 30cm x 40cm.



#36

Orange Buoy [Catlins], 2018.
Oil on hessian, 46cm x 35.5cm.

