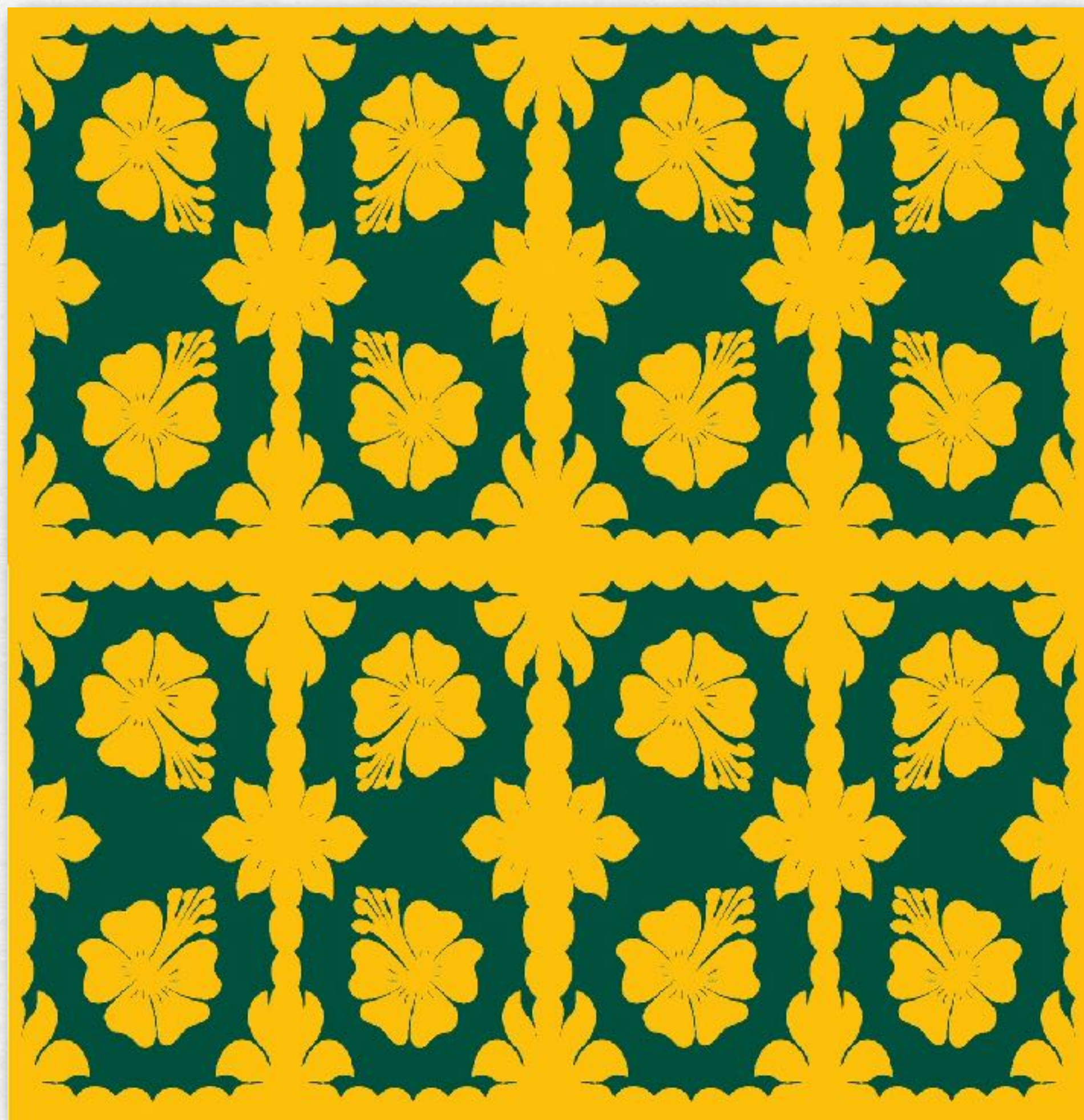


WORKS AVAILABLE  
24 JUNE–23 JULY 2022  
RDS GALLERY  
6 CASTLE STREET

[contact@rdsgallery.co.nz](mailto:contact@rdsgallery.co.nz)  
[rdsgallery.co.nz](http://rdsgallery.co.nz)





*HEMI HOSKING*

*Twovaevae*

2022

Silk screen print

650 mm x 650 mm framed

[one in a series of 4 available  
prints]

©image, artist





PIPPI MILLER

*Dressing Up in Each  
Other's Clothes*

2021

Gouache on paper

430 mm x 345 mm unframed

590 mm x 490 mm framed

©image, artist





WESLEY JOHN FOURIE

Yes! Painting 1

2021

Found materials (cotton and silk on cotton  
bedsheet with acrylic dyes, oval  
embroidery hoop)

190 mm x 140 mm

©image, artist





WESLEY JOHN FOURIE

*Mum's Blankie (Other Love)*

2021

Found materials (assorted cottons and mixed fibres, including velvet, satin, and silk with cotton, on wool blanket)

1670 mm x 1950 mm

©image, artist





Taarn Scott

*Outlining/Shifting Channels*

2021

Pencil, fabric, and chain

3 panels: 1480 mm x 540 mm, 1900 mm x  
630 mm, 1500 mm x 590 mm

©image, artist





JAMES THOMSON-BACHE  
*Subject Matter*

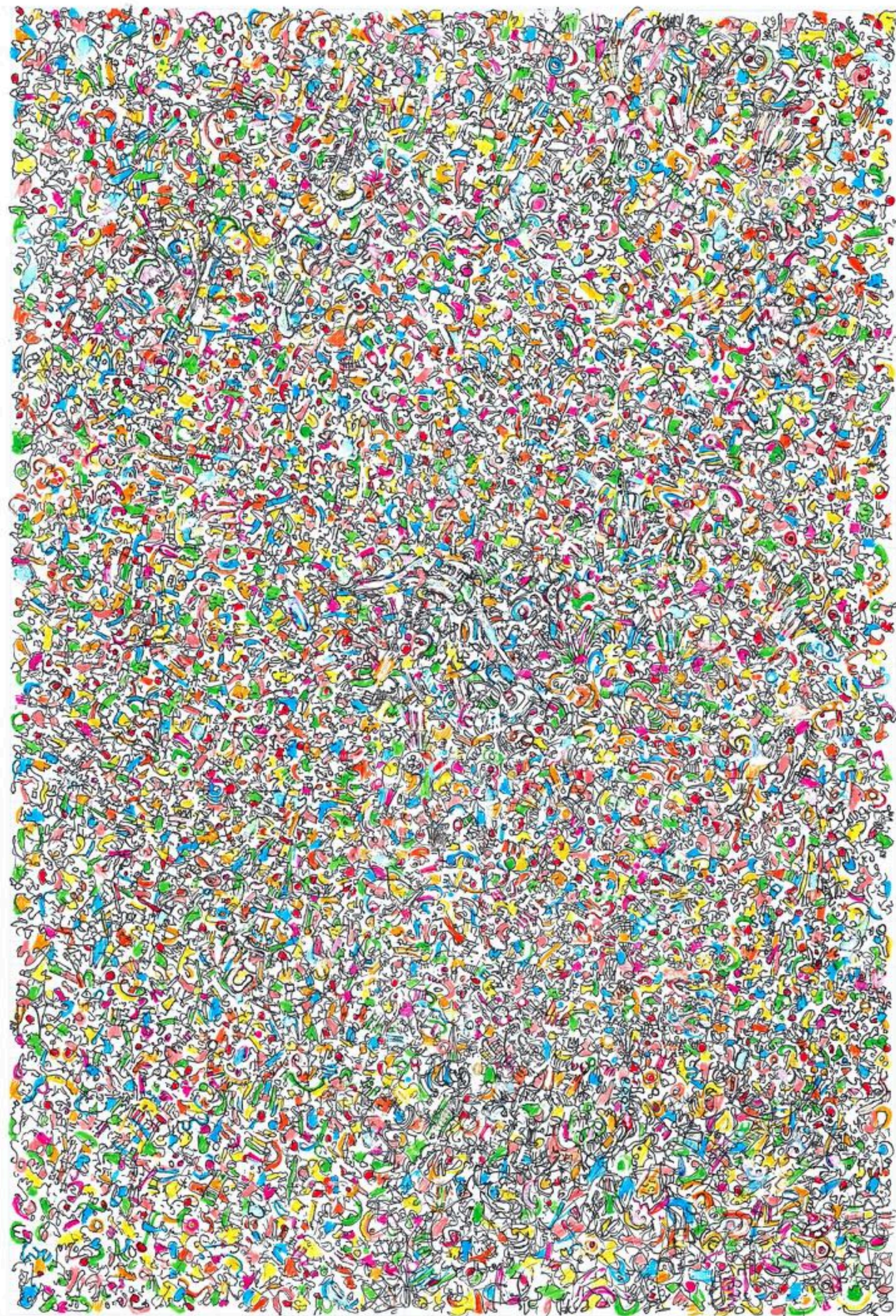
2021

Indian ink and acrylic on canvas

762 mm x 762 mm

©image, artist





JAMES THOMSON-BACHE

*Eye Candy*

2022

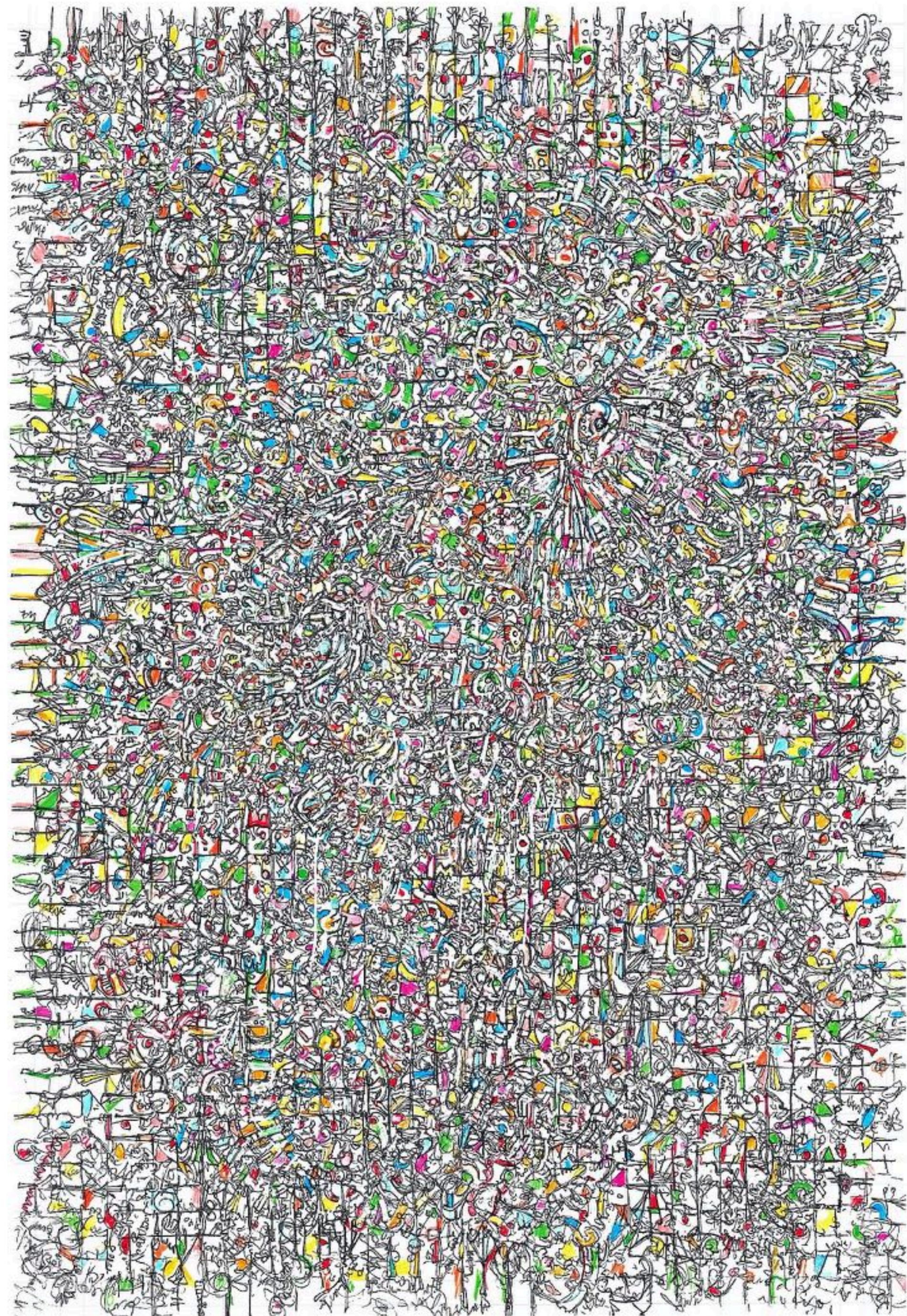
Fine liner on paper

270 mm x 185 mm unframed

445 mm x 320 mm framed

©image, artist





JAMES THOMSON-BACHE

*New City Planning*

2022

Fine liner on paper

270 mm x 185 mm unframed

445 mm x 320 mm framed

©image, artist





TROY BUTLER

40.75855° N 73.98527° W

[Elmo]

2022

Monoprint (photographic lithograph  
with gouache)

588 mm x 453 mm framed

©image, artist





TROY BUTLER

40.73322° N 74.00330° W

[Music]

2022

Monoprint (photographic lithograph  
with gouache)

588 mm x 453 mm framed

©image, artist





TROY BUTLER

*13.74331° N 100.51047° E*

[City]

2022

Monoprint (photographic lithograph  
with gouache)

588 mm x 453 mm framed

©image, artist





TROY BUTLER

40.57536° N 73.97977° W

[Creepshow]

2022

Monoprint (photographic lithograph  
with gouache)

468 mm x 569 mm

©image, artist





PRUDENCE JOPSON

*Seconds, Let's Go*

2021

Concrete, natural dyes, steel, found  
objects, polyurethane, schist sourced  
from Whakaharekai | Second Beach,  
Ōtepoti

L370 mm x H300 mm x W80 mm

©image, artist





PRUDENCE JOPSON

*Discontinued m9*

2021

Concrete, natural dyes, antique bolts ,  
polyurethane, natural fibres from  
Whakaherekau | St Kilda, Ōtepoti

L370 mm x H230 mm x W80 mm

©image, artist





PRUDENCE JOPSON

*Progress Valley*

2022

Concrete, natural dyes, gouache, steel,  
polyurethane, schist sourced from  
Whakaharekai | Second Beach,  
Ōtepoti

L 200 mm x H150 mm x W40 mm

©image, artist